

Restrictions & Covenants
 Volume 638, Page 235
 Volume 642, Page 641
 Volume 856, Page 777
 Volume 728, Page 890
 Volume 178, Page 395
 Deed Records

Cabinet D, Slide 357
 Cabinet D, Slide 365

Document, Volume 671, Page 210
 Document, Volume 838, Page 87
 Document, Volume 1067, Page 125
 Document, Volume 568, Page 449
 Document, Volume 607, Page 402
 Document, Volume 1322, Page 371
 Document, Volume 2590, Page 76
 Document, Volume 2001, Page 654
 effects Addition

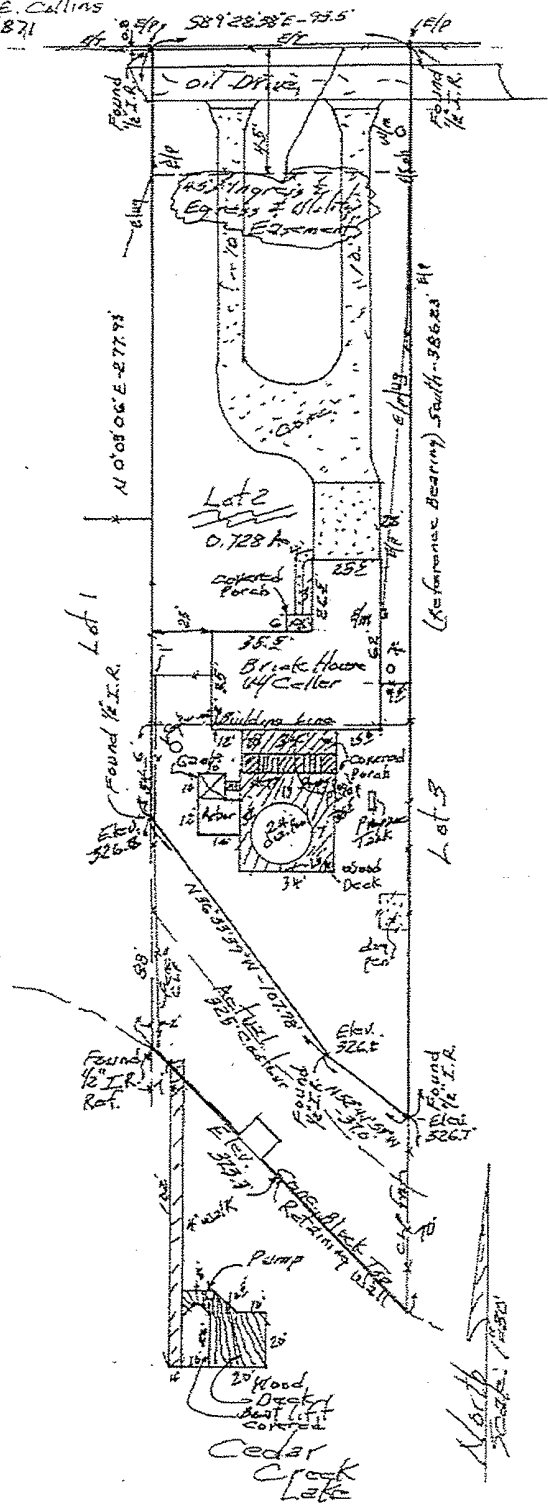
No part of this lot is in
 Zone N, as shown on the
 Flood Hazard Map No.
 48215C0175C
 dated 9-27-1991
 by FEMA

Right-of-Way - Sewer
 15' wide - Vol. 1927, Pg. 584

Plat showing lot no. 2, Daniels Point
 Replat lots 1-5, Thomas Carr Square
 A-133, City of Log Cabin, Henderson
 County, Texas, recorded in Cabinet D,
 Slide 365, Plat Records Henderson
 County, Texas

I, Martin E. Chambers, Registered Professional
 Land Surveyor No. 1581 do hereby certify that
 the Plat shown herein represents a survey
 made on the ground by me.

Martin E. Chambers
 Martin E. Chambers
 P.O. Box 358
 Estaca, Texas 75124
 Ph 972-425-6273



Address:
 13875 Parkway
 Log Cabin, TX 75148